

## PA28-140 - CHECKLIST

### STARTING: **RADIO MASTER OFF**

Fasten Seat Belts, Passenger Briefing

Brakes – ON and SET

Fuel on Lower Tank, KEY in ignition

Master Switch (BOTH sides) – ON

Fuel Pump - ON

Anti-collision Lights – ON

Carb Heat – OFF

Mixture – RICH

Throttle Cracked ( $\frac{1}{8}$ " –  $\frac{1}{4}$ "

Prime, if necessary

CLEAR PROP & Start (Warm up 1000 rpm)

**4 PRESSURE CHECK:** Oil, Fuel with pump OFF, Alternator, Vacuum

Radio Master – ON; Intercom – confirm ON

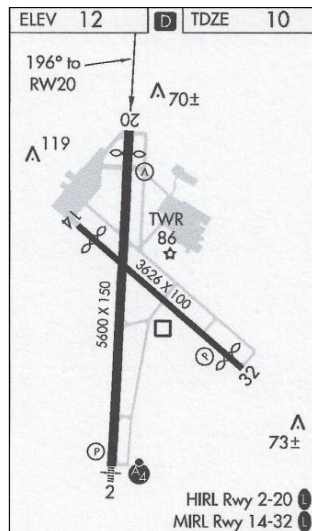
**GNX375 VERIFIED:** database, CDI, user fields, flight ID & ALT

Radios Tuned (HVN ATIS 133.65)

Set Altimeter and HI

Switch Tanks

Contact Ground Control (HVN GRD 121.7) → Brief Taxi Route



### BEFORE TAKE-OFF:

Brakes – ON and SET

Confirm Fuel on Fullest Tank, Oil Temp in Green

Mix RICH

**RUN-UP** to 1800 rpm

Check Engine Gauges, Vacuum ( $5" \pm 0.1$ ), Annunciators

Check Magnetos (125 rpm drop, 50 rpm max)

Check Carb Heat – ON, then OFF

Check idle, then 1000 rpm

Controls Free & Correct

Set Trim & Check Flaps: 10°, 25°, 40°

Check Flight Instruments

**CHECK:** Circuit Breakers, Transponder on ALT, Switches

Fuel Pump – ON

**TAKE-OFF BRIEFING**

Secure Door and Window

Check Traffic on final and Windssock

Get Tower Clearance for Takeoff (HVN TWR 124.8)

### TAKE-OFF:

Landing Light ON, Transponder ON, Time noted

CHECK Rwy Hdg, Oil & Fuel pressure, RPM, AS alive

Rotate at 50 – 60 mph

Airborne at 70 mph

<b>Speeds:</b>	Best Angle (Vx) = 78 mph	Best Rate (Vy) = 89 mph
	Best Glide = 80 mph	Cruise Climb = 100 mph

### CRUISE: "Lightening Check"

Throttle to 2350 – 2400 rpm

Fuel Pump OFF and TRIM

Lean Mixture as Appropriate – USE EGT

### APPROACH & LANDING: Before Landing Checklist

Seatback – Erect & Fasten Seat Belts

Fuel – On Fullest Tank

Mixture – RICH

Fuel Pump – ON

Carb Heat - Check

Flaps – within white arc (below 115 mph) → As Required

85 mph Approach – No Flaps

75 to 80 mph Approach – With Flaps

Check Wind Direction and Crosswind Component on Final

### AFTER LANDING & clear of runway:

Flaps up, Fuel Pump & Landing Light – OFF

### SHUTDOWN:

Brakes ON and SET

**Radio Master OFF** – confirm landing light & fuel pump OFF

Throttle Closed → Hot Mag Check

Throttle to 1000 – 1200 rpm for the count of 10

Mixture Lean

Magnetos – OFF once prop stops

Master – OFF

Beacon – OFF

Parking Brakes – OFF (Use ONLY when necessary)

Tie Plane Down, window closed, yoke secured, airplane locked